

Restroom Mr. Clean Disinfection – High Hand or Touch Points

Products Needed



Mr. Clean®
Disinfecting
Floor and
Surface
Cleaner

Tools Needed

- Disposable Poly Gloves
- Mop Bucket and Mop
- Paper Towels
- Toilet Brush
- Wet Floor Sign

Frequency

Every 4 Hours or When Visibly Soiled

Special Directions

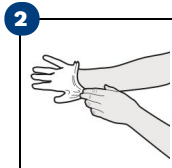
Wear gloves while cleaning the restroom.

NOTE: Recommended for use on non-food contact surfaces in hospitals, nursing homes, schools & colleges, veterinary clinics, animal life science laboratories and hotels.

Preparation

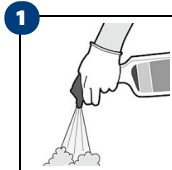


1 Close restroom to pedestrian traffic by placing the "wet floor" sign in front of door.

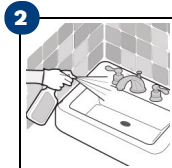


2 Put on disposable poly gloves.

Sink Area and Walls



1 Spray disinfecting cleaner on the restroom entrance door handles, hand dryer/towel dispenser, soap dispenser, stall door handles & locks.



2 Spray the sink with disinfecting cleaner.



3 Allow a 10 minute contact time.



4 Wipe dry restroom door handles, hand dryer/towel dispenser, soap dispenser, stall door handles & locks, and sinks with ONLY paper towel and throw them away.

Toilets and Urinals



1 Spray disinfecting cleaner onto hand rails and toilet paper dispensers, if needed.



2 Spray disinfecting cleaner onto exterior and interior surfaces of toilets and urinals, and handles/flushers.



3 Spray disinfecting cleaner in the stall floor area around the toilet.



4 Allow a 10 minute contact time.



5 Wipe hand rails and toilet paper dispensers with ONLY paper towel to remove cleaning and soil residues, if needed. Then throw away the paper towel.



6 Scrub interior and exterior of toilets and urinals.



7 Wipe the exterior of toilets and urinals with ONLY paper towel to remove cleaning and soil residues. Then throw away the paper towel.



8 Remove gloves and wash hands.

every experience counts.™

P&G
Professional